



TLI-SD08

SURFACE MOUNTED DOWNLIGHT

TECHNICAL

Materials of Housing	Aluminium
Light Source	CREE/Osram
Color Temperature	3000K/4000K/5700k
Luminous Efficiency@4000K	92lm/W
CRI	>85
Beam Angle(°)	60(24,36,45,60)°
Lifetime(hr)	40,000h
Product Finishing	White/Black/Silver

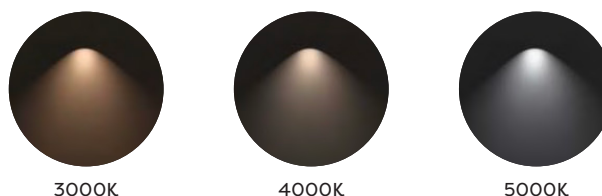
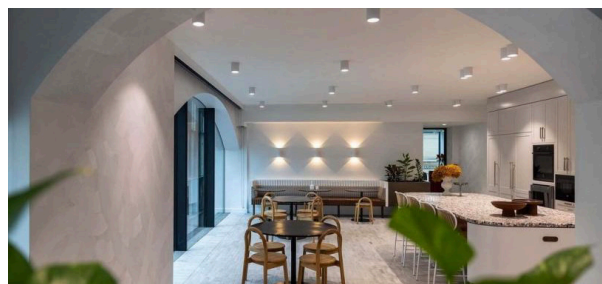
FEATURES & BENEFITS

CCT Selection	WW or 3CCT
LED Driver	Built-in
Dimming Option	Triac
Ingress Protection (IP Rating)	IP 54
Power Factor(PF)	≥0.9
Certification	SAA/RoHS/CE/CB

DATA SHEET

CODE	WATT	INPUT VOLTAGE	DIMENSION(mm)	LUMEN(±5%)
TLI-SD08-10W	10W	AC100-240V	Ø90x100	890lm
TLI-SD08-15W	15W	AC100-240V	Ø90x100	1600lm
TLI-SD08-25W	25W	AC100-240V	Ø120x110	3070lm
TLI-SD08-30W-DA	30W	AC100-240V	Ø160x120	3500lm
TLI-SD08-32W	32W	AC100-240V	Ø160x120	3540lm

EXPERIENCE



INSTALLATION & ACCESSORIES

